

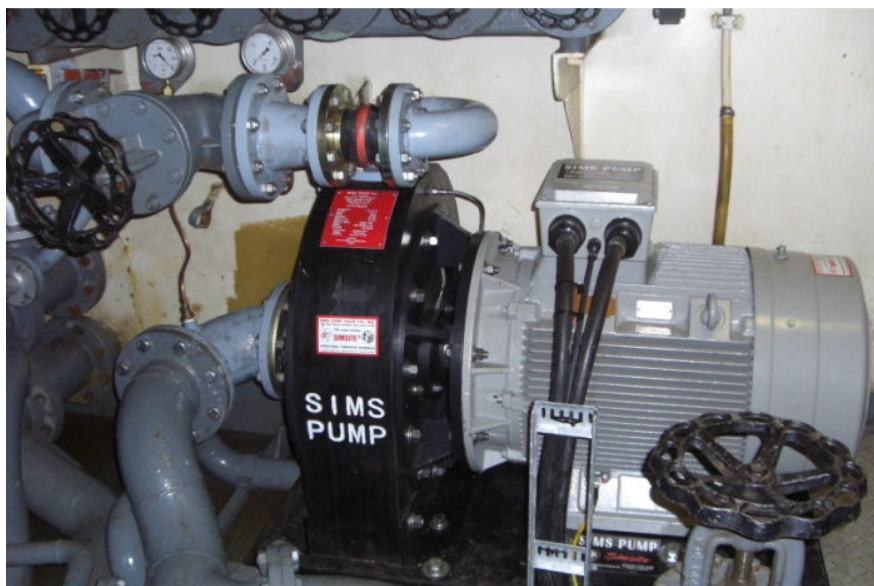
# **SIMSITE** 6 x 4 x 13 Fire Pump for German Navy

This 6x4x13 Fire Ballast Pump was designed to be installed on the German Navy oil spill recovery vessel MV Bottsand. The MV Bottsand is used for cleaning up after any kind of oil spill and this **SIMSITE** 6x4x13 Fire Ballast Pump is an integral part in the recovery system. The pump is designed out of **SIMSITE** Structural Composite with a capacity of 150 M<sup>3</sup>/H at 130M of head with the motor running at 2900 RPM and consuming 120 Hp.



SIMS is proud to announce that this pump has been certified by the Germanischer Lloyd (GL). The GL is an independent third party that certifies maritime equipment to ensure safety of life and property at sea. The certification from GL also includes prevention of maritime environment pollution.

This Pump will be pumping salt water while in use. **SIMSITE** Structure Composite is a smart choice for this application as it does not corrode in salt water.

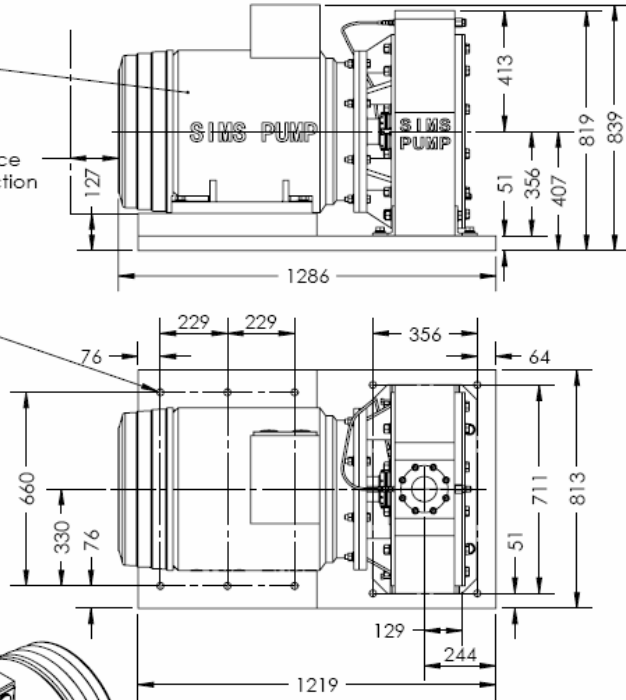
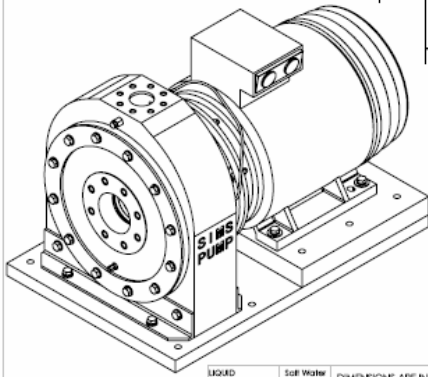


### Complete Pump with Motor Arrangement Drawing

Type: 14 BG 283-2AB60  
90 kW, 2975 RpM  
3 ph, 400 V, 154 A  
40 °C Ambient  
IP55 F Class Insulation

165 mm  
Minimum distance  
to nearest obstruction

10X Ø23 THRU ALL



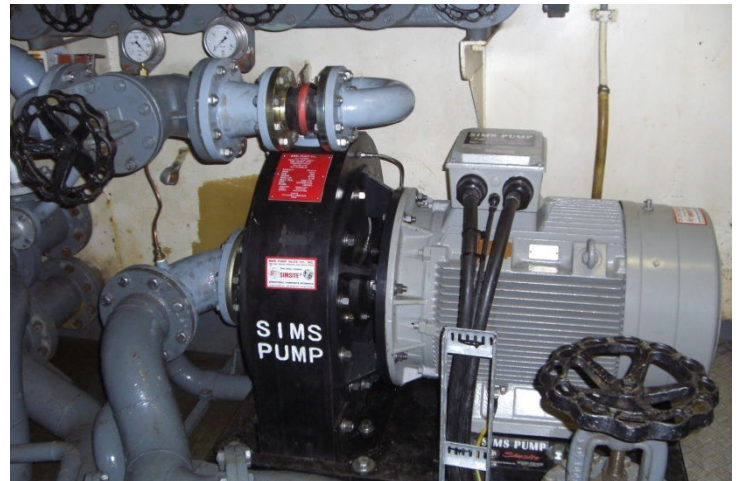
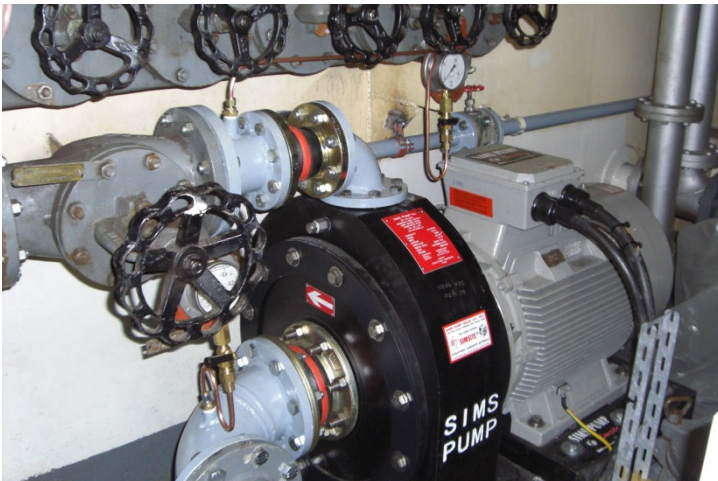
Piping connections

Flanges of DIN 2533 Standard:

Suction side - DN150, PN16  
Discharge side - DN80, PN16

Dimensions in mm

LIQUID		Soft Water	DIMENSIONS ARE IN INCHES		NAME	DATE	<b>SIMS PUMP VALVE CO., Inc.</b>	
CONCENTRATION			TOLERANCES:		DRAWN	VB	02/19/09	1314 Park Ave. Hoboken, NJ 07030
TEMPERATURE			ONE PLACE DECIMAL ±.1		CHECKED	VS	02/19/09	
MOTOR HP		90 KW	TWO PLACE DECIMAL ±.02		ENG APPR:			
RPM		2975	THREE PLACE DECIMAL ±.005		MFG APPR:			PUMP: SIMS
MATERIAL		SIMSITE 302	ANGLES ±.5°		G.A.			6x4x13
CAPACITY		150 m <sup>3</sup> /h			CUSTOMER	GERMAN NAVY		SERVICE: Balast/Fire Pump
HEAD		130 m			VESSEL	EVERSAND		
PROPRIETARY AND CONFIDENTIAL			DO NOT SCALE DRAWING		PLANT			
THE INFORMATION CONTAINED IN THIS					SEE DWG. NO.	<b>A</b>	<b>NS18698-A125</b>	REV.
DRAWING IS THE SOLE PROPERTY OF					SCALE: 1:24			SHEET 1 OF 1
SIMS PUMP VALVE CO., Inc. ANY					WEIGHT: 185			
REPRODUCTION IN PART OR AS A WHOLE								
WITHOUT THE WRITTEN PERMISSION OF								
SIMS PUMP VALVE CO., Inc IS								
PROHIBITED.								



**SIMS Pump Co.**  
**SIMSITE Structural Composite Pump**  
**Series: 10000**  
**Size: 150 x 80 x 330**  
**6" x 4" x 13"**  
**Drawing#: NS18698-A125**

Operating Point: 150 m<sup>3</sup>/hr 130 m Impeller Diameter: 323 mm Motor: 90 kW 2950 RPM

